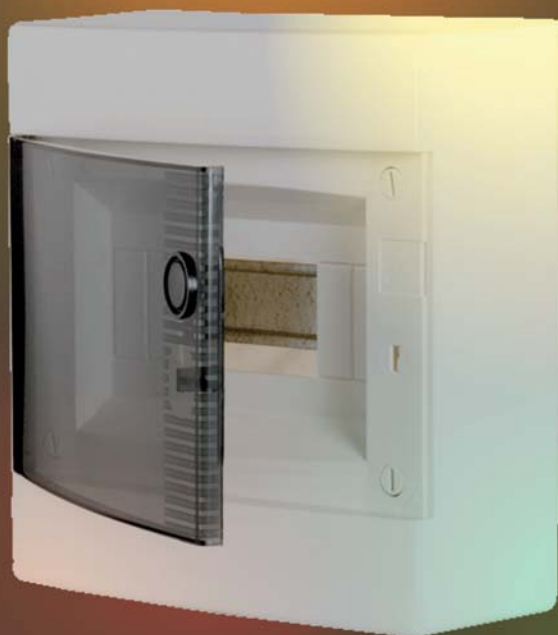


DIDO

Distribution boards DIDO E

DISTRIBUTION BOARDS



Home distribution board DIDO-E

 Rated current
63 A

 Rated voltage
400 V

 Degree of protection
IP 40

Home distribution board DIDO-E are available in two types: surface mounted and flush mounted boards, in one, two or three row design. Available with transparent or white doors. With lock set installation the board can be locked. Home distribution boards feature is easy build in, besides it has already installed a DIN rail for easier and quicker mounting of module devices.

Terminal blocks for PE and N conductors are attached as standard for all distribution boards. Distribution boards correspond to condition of insulation protection and are in accordance with standard IEC60670-24.

Surface mounted distribution board - transparent door

type	code No.	number of modules	weight [g]	packaging [pcs]
ECT4PT transparent door	001101000	4(+4)	0,598	1/5
ECT12PT transparent door	001101001	12	0,952	1/5
ECT18PT transparent door	001101002	18	1,207	1/5
ECT24PT transparent door	001101003	24	1,444	1/5
ECT36PT transparent door	001101004	36	1,965	1/5

Surface mounted distribution board - white door

type	code No.	number of modules	weight [g]	packaging [pcs]
ECT4PO white door	001101005	4(+4)	0,598	1/5
ECT12PO white door	001101006	12	0,952	1/5
ECT18PO white door	001101007	18	1,207	1/5
ECT24PO white door	001101008	24	1,444	1/5
ECT36PO white door	001101009	36	1,965	1/5

Flush mounted distribution board - transparent door

type	code No.	number of modules	weight [g]	packaging [pcs]
ECM4PT transparent door	001101010	4(+4)	0,681	1/5
ECM12PT transparent door	001101011	12	0,922	1/5
ECM24PT transparent door	001101012	24	1,338	1/5
ECM36PT transparent door	001101013	36	1,785	1/5

Flush mounted distribution board - white door

type	code No.	number of modules	weight [g]	packaging [pcs]
ECM4PO white door	001101014	4(+4)	0,681	1/5
ECM12PO white door	001101015	12	0,922	1/5
ECM24PO white door	001101016	24	1,338	1/5
ECM36PO white door	001101017	36	1,785	1/5



Accessories



Accessories

type	code No.	weight [g]	pakiranje [pcs]
lock set	001101050	0,015	1

Home distribution board DIDO-E

Technical data

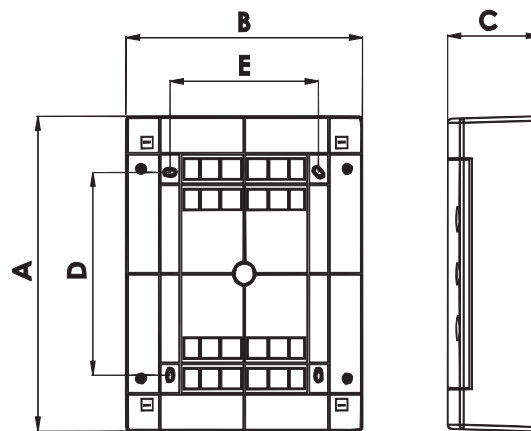
Degree of protection	IP 40
Insulation class	F
Colour	white
Double insulation	<input type="checkbox"/>
Standard	IEC60670-24
Installation temperature	-20° / +70°C

Number of N - PE terminals:

U,N 4-C	2x8...8 PE / 8 N
U,N 12-C	2x10 10 PE / 10 N
U 18-C	2x13 13 PE / 13 N
U,N 24-C	2x13 13 PE / 13 N
U,N 36-C	2x15 15 PE / 15 N

Surface mounted distribution board

type	dimensions					Max. allowed power losses when Max. number of devices are installed Pde
	A	B	C	D	E	
ECT4PT/ECT4PO	236 mm	215 mm	112 mm	107 mm	108 mm	14W
ECT12PT/ECT12PO	236 mm	287 mm	112 mm	107 mm	180 mm	22W
ECT18PT/ECT18PT	236 mm	396 mm	112 mm	107 mm	289 mm	22W
ECT24PT/ECT24PO	361 mm	287 mm	112 mm	232 mm	180 mm	24W
ECT36PT/ECT36PO	482 mm	287 mm	112 mm	357 mm	180 mm	26W


Flush mounted distribution board

type	dimensions				Max. allowed power losses when Max. number of devices are installed Pde
	A	B	C	D	
ECM4PT/ECM4PO	232mm	211mm	70mm	-	14W
ECM12PT/ECM12PO	232mm	283mm	70mm	-	22W
ECM24PT/ECM24PO	357mm	283mm	70mm	125mm	24W
ECM36PT/ECM36PO	482mm	283mm	70mm	125mm	26W

