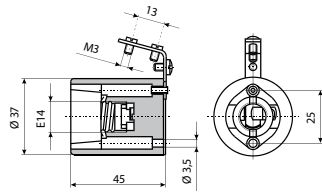
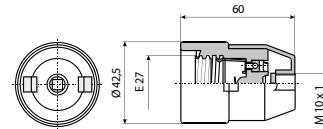


Porcelanski okov tip E 14 in E 27

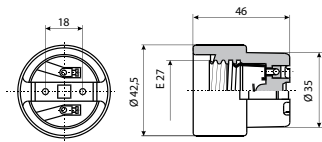
Tehnični podatki	
Nazivna napetost U_n	250 V
Nazivni tok I_n	2; 4 A
Presek vodnikov	0,5 - 2,5 mm ²
Dimenzije	E-14 in E-27
Standard	IEC 238, DIN VDE 0616, EN 60 238



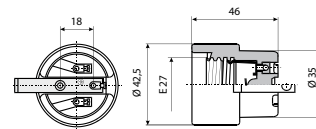
Porcelanski okov E 14 brez nosilca



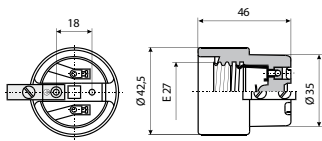
Porcelanski okov E 27 s pokrovom P



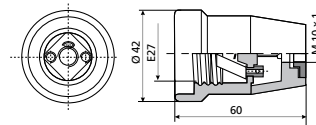
Porcelanski okov E 27



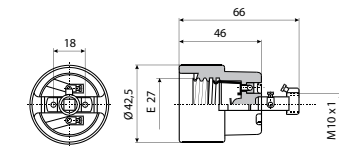
Porcelanski okov E 27 z nosilcem L



Porcelanski okov E 27 z nosilcem S



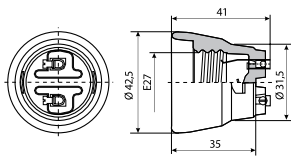
Porcelanski okov E 27 s porcelanskim pokrovom



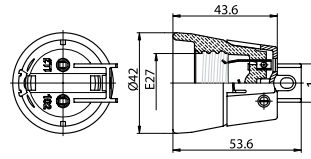
Porcelanski okov E 27 z nosilcem D

Porcelanski okov E 27, tip 100-102, 202 – 204

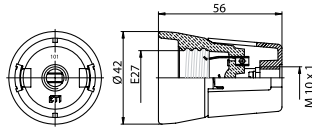
Tehnični podatki	
Nazivna napetost U_n	250 V
Nazivni tok I_n	4 A
Presek vodnikov	0,5-2,5 mm ²
Oznaka	E-27
Standard	EN 60 238
Temperatura delovanja	T = 240° C, tip 101 T = 160° C, tip 102



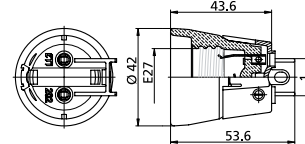
Porcelanski okov E 27-100



Porcelanski okov E 27-102



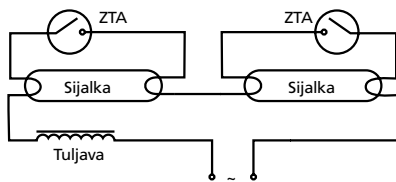
Porcelanski okov E 27-101



Porcelanski okov E 27-202

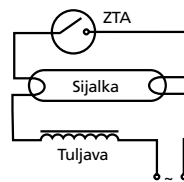
Štarterji za fluorescenčne sijalke

Štarterji za fluorescenčne sijalke ZTA in ZTE			
tip	Povezava	Obratovalna napetost [V]	Izpolnjuje zahteve
ZTA 4...22 W	Enojen AC 110-130 V 50Hz Serijski AC 220-240 V 50 Hz	Min. 103,5 Min. 180	IEC 60155 EN 60155 VDE 0712
ZTE/2 4...65, 80 W	Serijski 220-240 V	Min. 180	IEC 60155 EN 60155 VDE 0712

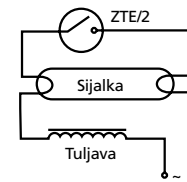


serijska vezava 220-240 V~

ZTA4...22 W



110-130 V~



220-240 V~

ZTE/2 4...65, 80 W